

Cal Flame®

SINCE 1978



Bistro Barbecue Kitchens (BBK)

Quality standards are at the core of every Cal Flame Outdoor Kitchen. From the inside out, the quality construction is undeniable. Each BBQ Island begins with a sturdy metal frame constructed from commercial-grade 16-Gauge Galvanized Steel. For added durability and moisture resistance, the island is dressed in a Hardibacker ceramic tile backer board. Your outdoor kitchen is then finished in the material of your choice and with premium electronic options to choose from, you can build a complete personalized entertainment center outdoors!

BBK-601

DIMENSIONS: 70.75" W x 38" H

The BBK-601 BBQ Island Kitchen is simple and modern design. The island is the perfect size to put on any niche of the patio. Comes standard with Cal Flame P4 Grill, a centralized 27" access door for the propane tank, outdoor electrical for your electronics, and space on each side of the grill for main dishes. The BBK-601 is built to suit your taste. However, you can enhance your grill by adding LED lighting, umbrella hole, sound system and more... just ask!

Features

- Cal Flame P4 Grill
- Motorized Rotisserie
- Griddle Tray
- Smoke Tray
- Grill Cover
- Porcelain Tile of Your Choice 12" x 12"
- Ameristone Stucco Standard Finish
- Outdoor Electrical x1
- 27" Centralized Access Door
- 16-Gauge Galvanized Steel Frame
- Hardibacker Ceramic Tile Backer Board
- Ventilation Underneath

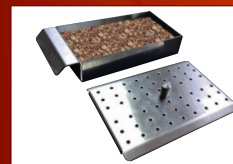
Features include the following stainless steel equipment:

- P4 Grill with 4 Burners, LP
- 27" Single-Access Door
- Motorized Rotisserie

P SERIES P4™ 4-BURNER DROP-IN GRILL BBQ13P04



P-Griddle Tray
Enjoy fried favorites like eggs or bacon with this griddle tray.



P-Smoke Tray
Infuse poultry and meats with the smoky flavor everyone loves!



P-Grill Cover
Protect and house the grill with a durable vinyl cover.



*Images are for illustration purposes only. Actual product may differ.

WWW.CALFLAMEBBQ.COM