

*Gal Flame*<sup>®</sup>

## Fireplace

United States & Canada

# Owner's Manual



LTR50001006  
3/20/2025 Rev 1.2

# Table of Contents

- Important Safety instructions ..... 3
  - Placement & Warnings ..... 3
  - General Set-Up ..... 3
  - Operation and Additional Warnings ..... 3
  - Maintenance and Repair ..... 4
  - Storage ..... 4
  - Precautions With Children ..... 4
- Proper Location for the Fireplace ..... 5
- Gas Supply Requirements for NG & LP ..... 6
  - Natural Gas Requirements & Information ..... 6
  - LP Information for Converted Units ..... 6
  - LP tank Requirements ..... 6
  - LP Tank Enclosure ..... 8
  - LP Conversion Information ..... 9
- Leak Test Procedure for NG and LP ..... 11
  - Unable to stop a leak? ..... 12
- Preparing The Fireplace Burner ..... 14
  - Fireplace Log Placement ..... 16
  - Additional Warnings & Guidance ..... 17
- Operating the Fireplace ..... 18
  - Lighting the Fireplace for the First Time ..... 18
  - For Your Safety, Read Before Lighting ..... 18
  - Lighting Instructions for Auto Starters ..... 19
  - Turning off the Gas ..... 19
- Cleaning and Maintenance ..... 20
  - General Maintenance ..... 20
  - Cleaning of Fire Logs ..... 20
- Specification and Information ..... 22
  - Specification Table ..... 22
- Cal Flame Limited Warranty ..... 24

Copyright 2026 LMS. All Rights reserved.  
Duplication without written consent is strictly prohibited.

Cal Flame® is a registered trademark.

Due to continuous improvement programs, all models, operation, and/or specifications are subject to change without prior notice.



**Warning! Proposition 65 Warning:** handling the brass material on this product exposes you to lead, a chemical known to the state of California to cause cancer, birth defects and other reproductive harm.

This product and the fuels used to operate the product such as propane and natural gas, and the products of combustion of such fuels can expose you to chemicals including Benzene which is known to the state of California to cause cancer, birth defects, or reproductive harm.

For more information, go to [www.P65warnings.ca.gov](http://www.P65warnings.ca.gov)

**LTR50001006**  
**12/2/2026 Rev 1.3**

**Warning:** Improper installation, adjustment, alteration, service, or maintenance can cause injury or property damage. **Read the installation, operating, and maintenance instructions thoroughly before installing or servicing the unit.**



### Placement and Warnings

- Cal flame fireplaces are designed for outdoor use only.
- Never locate this appliance in an enclosed room, under a sealed overhead structure, or in any type of enclosed area such as a garage, shed, or breezeway. Keep clear of trees, shrubs, or other flammable materials above or around the fireplace.
- Cal Flame fireplaces are not designed to be installed in a moving fixture, this included recreational vehicles, trailers, boats, or yachts.
- Maintain a minimum distance of 24" inches (61cm) in all directions of the fireplace from flammable materials, including overhead materials such as patio covers and outdoor equipment covers.
- The area surrounding your fireplace must be clean, and free from flammable fluids or materials, such as mops, rags, plastics, gasoline, cleaning fluids, and solvents for example.
- Do not store spare LP canisters or other potential fuel sources near or inside of the fireplace.
- Do not place the fireplace underneath low hanging tree branches or other flammable materials. Minimum area of 4-6 feet
- Never move, place, or lift, the fireplace without assistance, the use of a dolly or cart will be needed in moving the fireplace, as the frame is made of steel, and the stone materials are very heavy.
- Some communities have residential codes with outdoor fireplaces, its highly advised to look into local regulations before installation.
- The Fireplace must be placed on leveled ground, if placed in uneven ground, there can be a tip over risk. Do not place the fireplace where water can collect or pool for long periods of time.

- Before installing the fireplace copy all product information from the appliances serial number plate, the back of this manual may be used to write down, serial number, fuel type, and model.
- Serial number plate is located on the perimeter of the fireplace, most commonly along the backside.
- Keep all electrical cords and fuels away from the front of the fireplace, chimney, and heated surfaces.
- Before using your Cal Flame Fireplace to prevent fire or smoke damage, remove all packaging materials from the fireplace before operating.
- Have a ABC powder based fire extinguisher within a reasonable proximity to the fireplace.



### Operation & Additional Warnings

- Do not use the fireplace for anything other than its intended use.
- **Cal Flame Fireplaces manufactured on/after 2026 are designed to use Natural Gas. Only use LP on a Cal Flame fireplace that has been converted for LP fuel use.**
- In the event that the fireplace burner goes out, turn the burner knob to the full off position, and allow the fireplace to "air out" do not attempt to use the fireplace until the fireplace has enough time to dissipate.
- Never use the fireplace with loose fittings, connections, or a loose/damaged LP hose if using a converted unit. If you smell gas, keep away from the appliance and contact the local fire department
- Only attempt to shut off the fuel source if no flame is present within or around the fireplace.

### General Set-Up

- **We recommend that a licensed contractor install your Cal Flame product. Installation must conform to all local codes. In absence of local codes follow the National Fuel Gas Code, ANSI Z2223.1/NFPA 54 or CAN/CGA-B149.1, Natural Gas and Propane Installation Codes.**

### DANGER

#### What To Do If You Smell Gas

- Shut off gas/fuel to the appliance
- Extinguish any open flame.
- If gas odor persists, keep away from the appliance and contact your gas supplier or fire department.

- Never use the fireplace in windy conditions, if the unit is used in a consistently windy area, a windbreak or some landscaping will be required, in order to control windy conditions. Always adhere to the specified clearances listed in this manual.
- Never throw sealed or pressurized cans/cylinders into a lit or hot fireplace/firepit.
- When the unit is not in use, be sure to turn off the gas valve on the NG line or the LP tank.
- When housing an LP canister for an LP fireplace, Do not install your LP cylinder housing in such a manner that its cross vents are blocked. Fresh air must be able to pass through the enclosure to safeguard against residual gas accumulation. Failure to do so may cause fire or explosion.
- When handling a LP gas line and connectors, do not allow them to come in contact with any metal surfaces of the cabinet. Do not drop or throw the LP connectors.
- Do not use fuel such as wood, compressed logs, charcoal briquettes, or any other non approved fuel in the fireplace or firepit.
- Gas sources to a fireplace that has been converted for LP fuel, must be regulated. Do not operate the fireplace if the LP regulator have been removed, as a fire or explosion may occur.
- Never leave a lit fireplace unattended when in use.
- Do not use water to extinguish grease/oil fires, suffocate the flame by turning off the appliance and use a use an ABC Fire extinguisher (powder or foam) if the flame continues to grow. NEVER FIGHT AN OUT OF CONTROL FIRE. Contact your local fire department, and safely disconnect/close the fuel source if possible.
- Never allow clothing or other flammable materials come in contact with or be close to any grate, burner or hot surface until it has fully cooled. Never wear loose fitting or hanging garments when using the fireplace, this can catch fire and lead to injury or death.
- When using the fireplace, do not touch the hearth, exterior rocks, the chimney, or immediate surroundings, as these surfaces will be very hot causing burns.
- Do not heat any unopened or pressurized glass/metal containers. Pressure may build up and cause the container to burst, possibly resulting in serious personal injury or damage to the fireplace.
- Do not reach over your fireplace when hot or in use.

## Maintenance and Repair

- Spiders and other insects can nest in the burner of the fireplace and block the gas and air flow to the burner ports. This creates a dangerous condition that can result in a fire behind the valve panel. Inspect and clean the fireplace burner if needed with compressed air and a microfiber towel. A burner with restricted flow that can not be cleaned, must be replace.
- Unless specifically recommended in this manual, do not repair or replace any part of the fireplace. A qualified technician should perform all services. Any repairs made by a non-LMS approved dealer technician will void your warranty.
- The appliance should be visually inspected before each use, and inspected annually by a qualified service technician.
- Inspect the fuel hose connection, any cracked, damaged, or collapsed hoses must be immediately replaced before using the fireplace
- Unless specifically recommended in this manual, do not repair or replace any part of your fireplace. Have a qualified technician perform all service. Any repairs made by a non-approved technician will void your warranty.

## Storage

- When your Fireplace is not in use, turn off the gas flow at the gas valve or the LP cylinder.
- Long term or short term storage of the fireplace indoors is permissible for LP Converted fireplaces. Always disconnect and remove the LP canister when storing for an extended period of time.
- Never leave an open flow LP cylinder connected to the unit when not in use

## Precautions With Children

- Children should never be left alone or unattended in an area where the unit is located. Place your fireplace away from areas where children play. Do not store items that may interest a child to go near the fireplace, or the fireplace control panel.
- Never leave children unattended near the fireplace, both during operation and when not in use. Close supervision of children is necessary when in use.
- Never allow children to sit or stand on any part of the fireplace.
- When the unit is not in use, ensure that the Ng gas valve or the LP cylinder valve is closed to prevent accidental activation. This will ensure that if the valve dial is turned on, no gas will leak through the burner.

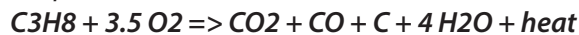
## Foundation Requirements

Cal Flame fireplaces are constructed with strong and heavy materials such as its steel frame and stucco/stone decor. Due to this a proper foundation/base must be built for the fireplace to safely support and operate your unit. **The foundation must be level and built with quality cement material with a thickness of 2-4" (5-10cm). Flammable materials, loose materials and uneven materials such as gravel and tiles are not considered adequate foundation materials.**

There are several considerations when determining the placement of your new fireplace. Review any applicable local regulations on Natural Gas decorative outdoor firepits/fireplaces in your community. When planning the location, ensure there is no flammable materials above the fireplaces chimney by at least 4-6 feet. Exhaust gases from the smoke stack will be hot, and can trigger a fire if this precaution is not followed.

When determining your fireplaces final location, keep any flammable materials at least 6 feet away from the front of an activated fireplace. Do not place the fireplace in an enclosed space, proper air flow is necessary. Consider the environmental factors of exposure to wind, proximity to traffic, and windows that open into the home. Avoid placing the fireplace near windows of the home/living areas, due to smoke and carbon dioxide/monoxide generated while burning propane or natural gas.

*\*\*Propane*



**Cal Flame Fireplaces are Designed for Outdoor Stationary Use Only.**

### California Proposition 65 Warnings



**Warning:** This product is manufactured with and contains one or more chemicals known in the state of California to cause cancer, birth defects or other reproductive harm This product and the fuels used to operate this product (propane or natural gas) can expose you to chemicals including Benzene, which is known in the state of California to cause cancer, birth defects, and other reproductive harm.

More information about Proposition 65 for California owners can be found: [www.P65Warnings.ca.gov](http://www.P65Warnings.ca.gov)



### Carbon Monoxide Hazard

This appliance can produce carbon monoxide which has no odor.



Using it in an enclosed space can kill you.

Never use this appliance in an enclosed space such as a camper, tent, car, or home.

## Gas Supply Requirements for NG & LP



**Cal Flame Fireplaces are Designed to operate with NG fuel. The following section provides additional information for NG installations.**



### Natural Gas



#### **NG Service Installation and Connection.**

Natural gas installation of this appliance must conform with local codes or, in the absence of local codes, review the national fuel gas code, ANSI Z223.1a-1998. Installation in Canada must be in accordance with the standard CAN/CGA-B149.2, Propane Installation Code.

The home owner may choose to build/install their natural gas service line, but you will need to make sure you have all required permits and ensure the installation complies with State and local codes. Due to this we recommend you hire a certified contractor, if you do not want to do the installation yourself. It is the responsibility of the owner to ensure a proper NG installation has been performed. The natural gas pipe from your house to the location of your fireplace needs to be  $\frac{3}{4}$  inch, and must terminate with a shut off valve with a  $\frac{1}{2}$  male fitting. Check with a contractor or your local inspector for any specific gas requirements. Always verify the gas rating plate to ensure the gas supply you are hooking up to is the gas type the fireplace is designed for. Never connect the fireplace to an unregulated gas supply.

**STATE OF MASSACHUSETTS:** Massachusetts requires all gas be installed using a plumber or gas fitter carrying the appropriate Massachusetts license. All permanently installed natural gas or propane installations require a "T" handle type manual gas valve be installed in the gas supply line in this appliance. This does not apply to portable propane installations using a 20 pound cylinder.

#### **Shut off Valve**

Ensure that the service supplying the fireplace is fitted with a shut off valve conveniently positioned near the fireplace and giving ease of access.

The fireplace must be isolated from the gas supply piping system by closing its individual manual shutoff valve during any pressure testing of the gas supply piping system at test pressures equal to or less than 0.5 psi (3.5 kPa).

### Liquid Propane Information for Converted Units



#### **Gas Requirements and Connection**

**IMPORTANT:** The Cal flame fireplace is manufactured to operate connected to a Natural Gas line (NG), however this fireplace can be converted to operate with Liquid Propane (LP) by an authorized technician. This fireplace does not include a regulator for converting the unit to LP; the conversion kit can be ordered separately. The kit can be ordered through [www.Quickbbqparts.com](http://www.Quickbbqparts.com) or through an authorized Cal Flame dealer.

### LP Tank Requirements & Information

#### **Tank Requirements**

For plumbed-in LP installation, use a convertible regulator and set it for LP gas. Maximum Line pressure for plumbed-in propane is 14"WC (3.5kPa). Minimum line pressure for propane is 11"WC The unit must be used with the gas pressure regulator. The regulator controls and maintains a uniform gas pressure in the manifold. The burner orifices have been sized for the precise gas pressure, delivered by the regulator delivered with your fireplace.



**WARNING:** Attempting to operate the unit without the gas regulator may result in an explosion or risk of death.

## LP Tank Requirements & Information Cont.

### Cylinder specifications

The LP cylinder must be constructed and marked in accordance with the *Specifications for LP-Gas Cylinders* of the US Department of Transportation or the National Standard of Canada, *CAN/CSA-B339, Cylinders, Spheres and Tubes for transportation of dangerous goods: and Commission*, as applicable.

**Warning: Do not store spare LP cylinders under or near the appliance. Never fill the cylinder beyond 80%, failure to follow this warning can result in an explosion and/or fire resulting in injury or even death.**

### Transporting and Storing LP Gas

Transport only one cylinder at a time. Ensure the cylinder is secured in an upright position, with the control valve turned off, and the dust cap in place. Store LP cylinders outdoors, away from children and heat sources. Do not store LP cylinders in a building, garage, or any other enclosed area. Place the dust cap on the cylinder valve outlet whenever the cylinder is not in use. Only install the type of dust cap/cover on the cylinder valve outlet that is provided with the cylinder valve. Other types of caps/covers can result in leakage of propane.

### Additional LP Tank Information

Any LP gas cylinder used with this fireplace must be approximately 12 inches in diameter (30.5cm) and 18" inches high (45.7cm).

The maximum fuel capacity of 20lbs (9.7kg) of propane 5 gallons. The full cylinder weight should be approximately 38 lbs: 43.7lbs nominal water capacity, (17.2kg : 18.8kg nominal capacity). Never fill the cylinder beyond 80% full.

If you do not have an updated filler valve on your existing propane tank, you will need to purchase one at your local hardware store. Without it you will not be able to attach your tank to your unit or refill the tank at your local propane refill station.

**Minimum line pressure for LP is 11"WC for proper operation.**

**Maximum line pressure for LP is 14" WC**



**Note: The LP cylinder must have an OPD valve installed onto it. The OPD valve is designed to ensure proper overfill protection, this allows for safe operation of the propane fueled equipment, cutting fuel flow if tipped over as well.**

**OPD valves are mandatory on all 4-40 lbs propane tanks. The OPD valve is normally pre-installed upon purchasing a 20lbs propane tank by the propane tank manufacture.**

## LP Tank Enclosure



Cal Flame Fireplaces that have been converted to burn LP gas, must house the LP cylinder within a safe vented enclosure. This housing is designed to vent and prevent accumulated gases and moisture/condensation from a LP cylinder during operation of the fireplace.



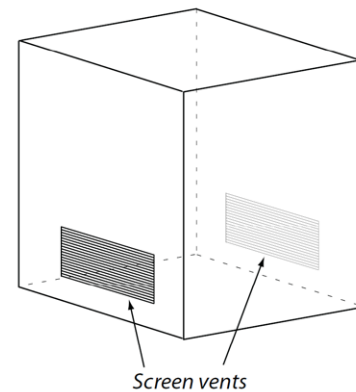
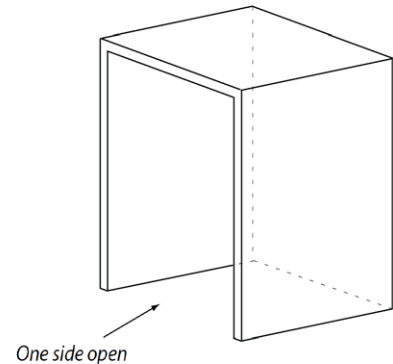
### Propane tanks must be placed in a safe enclosure

Cal Flame fireplaces are not designed with enclosures for the propane gas cylinder/tank. Please follow these recommended specifications, and follow local codes. Ensure cylinder valves are readily accessible. A door on the enclosure to gain access to the cylinder is acceptable, provided it is non-locking and can be opened without the use of tools.

Enclosures for propane tanks need to be ventilated by openings at the level of the cylinder valve and at floor level. This is accomplished by either having one side of the enclosure opened, or screen vents on the bottom.

The secondary method requires at least two equally sized vents/openings spaced opposite to each other. Openings shall be at floor level and no more than 5 inches above the floor, making sure that the total free area greater than 10 in<sup>2</sup> (3.2 cm<sup>2</sup>). Make sure every opening has minimum dimensions to permit the entrance of a 1/8 in (3.2 mm) diameter rod.

There must be a minimum clearance of 2" between the lower surface of the floor, and the propane enclosure.



### Guidance for the Authorized Gas Installer

All Cal Flame fireplaces are shipped from the factory, equipped to burn NG (Natural Gas) fuel. Cal Flame offers a LP (Liquid Propane) kit that includes orifices for safe , that must be used when the fireplace is plumbed into its dedicated NG line. To perform the conversion, follow the directions provided within the kit, and review the instructions below to safely prepare the unit for the conversion process.

We advise to contact a plumber or a technician, to install and test the new orifice for LP use.

1. Make sure the unit is not in operation, and it is cool to the touch. Shut off and disconnect propane fuel sources at regulator end.
2. Carefully remove the storage cover, lava rocks, and fire logs. Open the rear access door for easy access to connectors or gas lines.
3. While holding the NG orifice in place on the burner within the firepit with an adjustable wrench, use a secondary wrench to remove the fitting
4. Provide the included instructions within the LP kit to the designated plumber or contractor to complete.

**This Page is Intentionally Blank**



### Leak Test Procedure

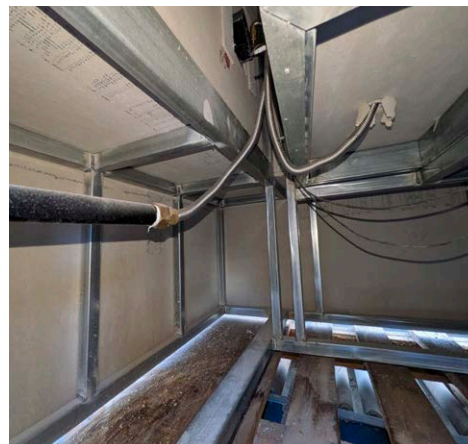
Perform a leak test at least once a year to the fire place, whether the gas supply had been cut or disconnected, or if the LP cylinder has been disconnected in LP converted models. In addition, a leak test must be performed whenever any part of the gas system is disconnected or replaced, perform a leak test.

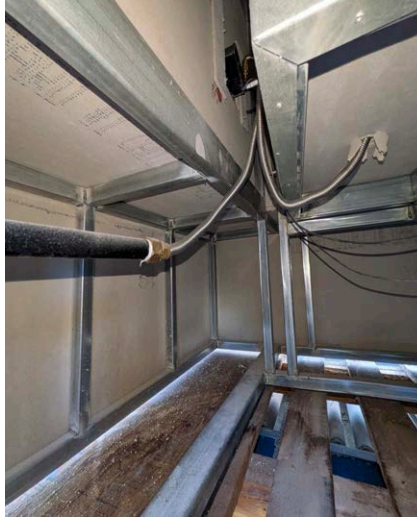
Remember to only test and operate your fireplace outdoors, in a well ventilated space. **Never smoke or allow other sources of ignition in the area while performing a leak test. Do not use a flame such as a lit match to test for leaks.**

To perform a leak test first open up the rear access door for the fire place, and prepare a soapy water solution, and place inside of a spray bottle. Follow the general procedure below to perform a leak test in most NG and LP systems.



1. Prepare the soapy water solution by mixing 2 parts water with 1 part soap. Then verify that the gas line is connected to the fireplace.
2. Make sure the fireplace/pit control knob in the off position.
3. NG connected fireplaces should turn the main NG valve to the open position, or for LP converted models, connect and open the Lp gas valve from the cylinder.
4. Open the rear access door placed next to the rear flared fitting for piped in gas. to access the internal pipes going towards the fireplaces control valve & burner.





5. Using the soapy water solution, spray liberally onto the unions and fittings that are accessible within the access door, and the fitting next to the fireplace burner.
6. After applying the soapy water, briefly open the gas valve and observe if there are any visible gas bubbles forming between unions & fittings. Only allow the gas to run for a few seconds to observe leaks from mentioned locations.  
*\*Note, the smell of gas will be noticeable as it escapes from the burner.*
7. Stop a leak by tightening a loose joint if the leak is from a joint/fitting, or by replacing the faulty part ordered from the manufacturer.
8. After verifying that no leaks were visible, turn the fireplaces control dial to the off position.

#### **IF YOU ARE UNABLE TO STOP A LEAK**

1. Turn the control knob back to the full OFF position.
2. Shut off the gas supply to the fireplace turn the gas valve on the NG line to the off position. Release pressure in the line and manifold by turning the control valve on quarter turn. For LP Fireplaces, turn off the propane from the valve on the canister. Then in a similar fashion turn the control valve on to release gas trapped in the pipping and manifold.
3. If the fireplace is connected to Propane remove the cylinder from the fireplace.
4. Call an authorized gas appliance service technician to inspect and repair the gas line (LP & NG)

**Never try to put out or attempt to turn off the LP gas cylinder of a fireplace, that is experiencing out of control flames, contact emergency services.**

**Do not use the appliance until the unit has been repaired and passes a secondary leak test post-installation.**

This page is intentionally blank

## Preparing The Fireplace Burner

### Fireplace Burner

The fireplace uses a large gas burner to disperse gas inside of your fireplace. You will need to follow the steps within this guide to properly connect the burner. (Gas installations should be done by an experienced technician/contractor. **Materials Needed: Gloves (optional), adjustable wrench, 1 AA Battery**

1. Before operating the fireplace for the first time. Make sure that all packaging material such as pieces of foam and wood blocks are removed from the fireplace hearth. Make sure the packaging of fire logs and/or lava rocks are removed as well.



2. Verify that the igniter to the burner is not cracked or bent. You may also want to verify and ensure that the igniter itself did not loosen up in transit, this can be tightened by hand or with a small crescent wrench (14mm).



3. Approach the control panel of the fireplace and verify that a spark is generated between the igniter and the burner itself.



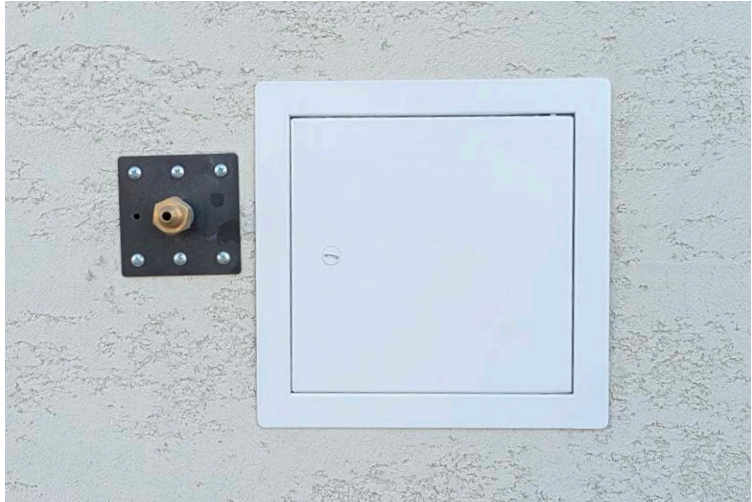
**\*\*Control Panel Color May Vary**

- In the chance that no spark is heard or detected, turn the cap of the igniter counterclockwise to open the battery housing inside of the igniter. Flip or replace the internal AA battery and test the igniter again for a spark.



**\*\*Control Panel Color May Vary**

- Using a 3/8ths NPT fitting flexible line for outdoor use, connect the fireplace to its dedicated NG line. Perform a leak test after tightening the fitting.



**\*\*Access Door Placement May Vary**

- Place logs and lava rocks as desired within the fireplace grate. Depending on your own preferences you can choose how to decorate your fireplace grate with the provided materials.



### Fireplace Log Placement

The log set, log grate/platform, and crushed lava rocks are shipped together on applicable Cal Flame fireplace & fire-pit models. Remove the log set and unpack all components. Keep in mind the logs are fragile, as they are built with heat resistant ceramics and other materials, place them within the fireplace with care.

When placing the lava rocks in the fireplace, **do not place lava rocks directly on the gas burner**. Placing the lava rocks on the burner will cause gas flow issues. Never use decor (logs, stones, etc) that are not rated for fireplace use, as materials within your fireplace are continuously exposed to open flames. Using unapproved materials can lead to a thermal explosion of the material inside of the fireplace, which can cause injury, damage to property, or death. Cal Flame is not responsible for any damages, injury, or fatalities associated with unapproved fireplace accessories/decor. Use of such items/equipment will void your warranty.

**Note: Be sure the unit is cool before touching any of the components.**



**Never use solid fuels such as wood, charcoal, compressed logs, or other traditional solid fuels. This fireplace is originally designed for NG fuel.**

## Additional Warnings & Guidance



**Warning:** Never use the fireplace in windy conditions if used in a consistently windy area a wind-break or some landscaping will be required.



**Warning:** Always adhere to the specified clearances listed in this manual.



**Warning:** Never throw sealed or pressurized cans/cylinders inside of a lit fireplace



**Warning:** Never use the fireplace with a damaged NG line or a damaged LP hose or with loose connections.



**Warning:** Always adhere to specified warnings and operation instructions mentioned or listed in this manual.

Additional Warnings and information can be found in the “Placement & Warnings”, “General Set Up”, and “Operation & Additional Warnings” sections of this owners manual, starting on page 3



**WARNING:** Do not place LP Cylinder within the Fireplace, underneath the hearth, or near the burner of the fireplace. LP Cylinders must be placed within their designed enclosure.



**WARNING:** Never store LP cylinders near or inside of the fireplace. When not in use, close the LP cylinders gas valve, and remove the LP hose from the cylinder.

**Lighting the Fireplace for the First Time**





Upon completion of connecting your fireplace to either natural gas or liquid propane, a small amount of air will be in the gas lines, when first lighting the burner it will take a few seconds for the lines to purge themselves of this air; you may need to activate the igniter several times when first lighting the unit.

Once the purging is complete, the burner will light and operate as intended if all requirements were followed as listed in this manual. Subsequent lighting of the appliance will not require purging unless the gas supply has been disconnected. Inspect the burner before each use of the appliance. If there is any evidence that the burner is damaged, it must be replaced before using the unit.

Never allow the ON/OFF valve to remain in the open position without placing a burning match on top of the burner FIRST. This will make sure that any escaping or residual gas is ignited or burned off.

You must have clear and easy access on the ON/OFF valve AFTER the appliance is installed and connected to the gas supplier in order to safely turn off the burner. Make sure the burner is seated, and installed properly prior to lighting the appliance. If the burner is damaged, install a replacement burner as specified by the manufacturer.

**For your Safety, Read Before Lighting**

-  Before operating, inspect the fireplace on all sides, and observe if an odor of gas is detected around the fireplace/pit and near the floor for LP fireplaces/pits. LP Gas is heavier than air, and will settle to the floor.
-  Use only your hand to turn the manual gas control valve. Never use tools. If the valve will not turn by hand, do not try to repair it. Call a qualified service technician for service. Applying force to the dial or attempting a repair may lead to a fire or explosion.
-  Do not use this appliance if any part has been under water. Immediately call a service technician to inspect the appliance for clogs or damage inside of the fireplace/pit. Replace any part of the control system or any gas valve that has been submerged underwater.
-  Make sure the igniter battery has been properly installed, the igniter will not operate properly with reverse polarity (backwards battery). We recommend at a minimum interval, to change the AA battery once a year. The lifetime of the battery depends on several factors including but not limited to the type of battery, ambient temperature, humidity, etc. Because of this there is no general expected lifetime of a battery for your fireplace.



### Lighting Instructions for Automatic Starters

1. Locate the manual gas control valve and igniter button, usually on the right side of the fireplace for most models. For firepit its highly advised to walk the perimeter of the firepit and locate the control panel, due to the various placement of the control panel depending on the model of firepit.
2. Make sure the fuel supply is properly connected and turned on at the source
3. Press the igniter button until you hear the sparking sound from the igniter. While pressing down on the igniter button with confirmation of a spark being released, begin to slowly turn the dial to the full flow position. The fireplace/pit should light within 5 seconds.  
**Note: if you do not hear a spark, replace the battery behind the igniter button.**
4. If a flame does not start within 10 seconds, shut off gas supply and wait five minutes and allow all gas fumes to clear. You may need to adjust/reposition the fire logs or lava rocks from the burner or igniter, and attempt to ignite the burner again. If this does not work, contact a qualified technician for service.

### To Turn off Gas

Turn the ON/OFF valve to the off position at the unit for natural gas unit. For propane units turn the ON/OFF valve to the OFF position of the unit, then turn the propane tank valve to the OFF position.

**Maintenance of Fire Box Items**

Inspect the appliance before initial use. Clean the appliance at least annually and have it inspected by a qualified service person. Periodically remove the logs and examine the burner, if the burner is dirty, clean it with a soft wire brush. Also examine the area around the burners air shutter, & remove any debris in this area. Performing this maintenance task will ensure the long life of the burner and fireplace/pit.

Periodically check the NG line connecting the Fireplace to the main line, to ensure it is not damaged. Never use the unit with a damaged NG fuel line or a damaged LP gas hose. NG gas lines must be inspected and serviced by a qualified NG installer only or a gas utility company.

Carbon (soot) may build up over time on the surfaces of the logs with heavy use. This is likely to occur with propane gas. Soot may be cleaned off the logs by using a dry nylon bristle brush or a cloth. While cleaning the logs avoid, applying excess pressure or dropping the logs, they are made of heat resistant ceramics and materials that may shatter or crack on impact. Avoid using detergents when cleaning the logs, use of detergents may lead to fading of the logs finish, it is recommended to use warm water instead.

**Caution: Never clean the fireplace/pit with an active flame. Do not clean the unit until the it is cool to the touch.**

**General Maintenance****Grout & Stucco**

When your cal flame product is built with stucco as a finish, or tile with grout, certain care must be taken into consideration.

Never use a pressure washer directly on grout between tiles, as the forceful application of water will over hydrate the grout between tiles, causing cracks and damage to the grout that may lead to loose or missing tiles.

BBQ islands that have stucco as a finish, avoid using a pressure washer as it will erode and remove layers of stucco over time, causing integrity issues for the BBQ island. You may use a garden hose nozzle that can provide a pressurized stream of water, without mechanical assistance from an electric or gas powered motor.

Damages caused by pressure washing are not covered under warranty. Cal Flame products are designed to withstand common weather events and conditions, pressurized water at the psi levels a pressure washer is able to produce is not replicated in nature.

## Rock & Rock Finishes

When a Cal Flame Fire Place, BBQ island, or Fire pit is built with rock or a styled rock finish. Care must be taken when performing exterior cleaning for this kind of exterior. Do not use a pressure washer on the rock or styled rock on any Cal Flame product. The use of pressurized water will over hydrate the rock and penetrate the cement boards holding the stone in place, causing integrity issues.

You may use a garden hose nozzle that can provide a stream of slightly pressurized water, without mechanical assistance from an electric or gas powered motor to rinse the exterior of your Cal Flame Fire Place, BBQ island, or Fire Pit. Below are some key points to know about when cleaning Rock finished Cal Flame products.



**Warning! Proposition 65 Warning:** handling the brass material on this product exposes you to lead, a chemical known to the state of California to cause cancer, birth defects and other reproductive harm.

This product and the fuels used to operate the product such as propane and natural gas, and the products of combustion of such fuels can expose you to chemicals including Benzene which is known to the state of California to cause cancer, birth defects, or reproductive harm.

For more information, go to [www.P65warnings.ca.gov](http://www.P65warnings.ca.gov)

**Specifications and Information**

<b>Dual Burner Fireplace</b>	<b>Natural Gas</b>
<b>Max. Input BTU/Hr</b>	90,000 BTU
<b>Manifold Pressure</b>	10" Water Column
<b>Maximum Gas Supply Pressure</b>	11" Water Column
<b>Maximum Inlet Supply Pressure</b>	13" Water Column

## Limited Warranty

All Cal Flame fireplaces are manufactured with the highest quality in mind, and are warranted to be free from defects in material and workmanship at the time of delivery. Direct any warranty issue with your fireplace via email to [customerservice@calflamebbq.com](mailto:customerservice@calflamebbq.com) or by phone at **1(800)-225-7727**.

LMS, Lloyds Material Supply the manufacture of Cal Flame, warrants fireplaces including their associated hardware from deterioration, corrosion, and defects in material and workmanship for a period of time defined within this warranty. With the exception of plastic components, which are warranted for a period of 90 days.

Years	Category	
5	Structure	Welding points and cement board specific to the structural integrity of the fireplace are warranted against defects in workmanship and materials for a period of five years.
2	Hardware	Hardware such as the fire grate and the burner are warranted against defects in workmanship and materials for a period of two years
1	Finish	The finish of the fireplace such as stucco, stone, tile, etc are warranted against defects in workmanship and materials for a period of one year.

## Extent of Warranty

This limited warranty is only valid on Cal Flame models delivered in the United States or Canada and extends through the selling dealer to the original purchaser at the original site of installation. This warranty becomes valid at time of delivery and ends either by specified time-frame listed above or upon owner transfer or relocation. This limited warranty is non-transferable in any way, which includes but not limited to, the resale of the unit, inheritance of the unit, or if the unit was obtained with the deed or title of the private residence. This warranty is void if the fireplace is used in a commercial setting or for profit as a featured amenity. Commercial settings introduce hazards and conditions that are not considered, when designing Cal Flame products. Commercial use or for profit use is defined by Cal Flame which includes but is not limited to, Air-bnb, restaurants, rental properties, timeshares, and other commercial uses where the provided good or service is the property itself where the fireplace resides, or services provided by the operator/owner of the property where the fireplace is installed.

## Structural

Cal flame fireplaces are built using rigid and heavy materials to endure the daily exposure to the outdoors, such as galvanized steel and cement board material. LMS warrants Cal Flame fireplaces to be free of structural defects and poor workmanship that can cause structural failure for a period of five years. This includes materials/items such as galvanized steel above the base of the fireplace, welding points, improper alignment of the frame and cement board material. This limited warranty does not cover what is considered normal wear and tear of the fireplace based on its final resting place. Damage sustained during seasonal weather patterns in climates that encounter below freezing temperatures or excessive rainfall would be considered normal wear and tear, and not considered a manufacturing defect. If a defect in structural integrity is discovered where a portion of the fireplace is sagging, stop use of the fireplace immediately and contact Cal Flame for further guidance.

## Structural Cont.

Information such as the fireplace serial number, the proof of purchase, and images of the defect are required to begin the claim/repair process. If the repair is deemed non-repairable, the fireplace may be replaced on a prorated basis with the same or a comparable unit. The owner will be charged 1% of the current retail cost for each full month of ownership from the date of purchase through the date failure it is determined to be non-repairable. This charge will be waived during the first 3 months of ownership. As the owner you have the choice to replace the unit, with a unit equal to or less than the value of the originally financed/purchased unit; if the desired replacement is of a higher cost than the originally financed/purchased unit, the fireplace owner will pay the difference of price, including any percent value lost over time through the proration period.

This limited warranty is void if the fireplace installation does not follow the outlined requirements that Cal Flame specifies. This includes factors such as failure to place the fireplace on a level base/ground where the fireplace rests, poor placement such as near a consistent water source or in an area where water/moisture can pool and collect. This warranty does not cover acts of god that are conditions out of the control of Cal Flame, or nature such as damage incurred to the frame or stone. An act of nature describe events such as earthquakes, flooding, storm surges, or other non-controllable weather events. It is the responsibility of the fireplace owner to take preventative measures to protect their fireplace such as using an outdoor cover when the unit is not in use, or gaining assistance to temporarily move the fireplace to a safer location.

## Equipment

This limited warranty covers against malfunction of factory installed control panels, burners, and the fire grate due to defects in workmanship or materials for a period of two years. This limited warranty covers the cost of parts required to fix or replace any defective component discovered upon the delivery and installation of the fireplace. This two year warranty period for equipment defects starts on the day of delivery, but no later than 90 days, only if the unit is stored in a proper manner described in this owners manual, if immediate installation is not possible.

## Performance

To obtain service in the event of a defect covered by this Limited Warranty, notify your Cal Flame dealer or Cal Flame as soon as possible, and use all reasonable means to protect the fireplace from further damage. Upon contacting the either the dealer that sold the unit, or Cal Flame with the fireplace's proof of purchase. A designated service representative will correct the defect subject to the terms and conditions contained in this Limited Warranty. There will be no charge for parts required to repair a defect, discovered within the first two years of ownership. Providing proper service access to affect the repair and costs of freight is your responsibility as the fireplace owner.

Freight charges for replacement parts is the responsibility of the fireplace owner. Parts and components can be shipped to the servicing Cal Flame dealer or to the customers registered address within their Cal Flame proof of purchase. The servicing dealer may charge the owner a travel/service fee as well as a diagnose fee if the cause of the issue is unknown, these charges are not covered under warranty. Your dealer nor Cal Flame is responsible for damages or costs to rebuild decks, masonry work, cement structures, or other decor/structures placed against or near the fireplace. Minimum clearance of 3 feet on each side is mandatory for all fireplaces. In the event that the fireplace is removed and transported to a repair facility for approved warranty repairs, and reinstalled, the cost of removal and re-installation will be your responsibility as the owner.

## Performance cont.

If Lloyd's Material Supply Company Inc (LMS), the manufacture of the Cal Flame brand determines that repair of the covered defect is not feasible, it reserves the right to provide a replacement unit of equal or lesser value to the original purchase price. In such an event reasonable costs for removal of the original unit, shipping costs from the factory for the replacement unit, and delivery and installation of the replacement unit will be the responsibility of the owner. The replacement unit will carry the balance of the original units warranty. This warranty ends either by specified time frame, owner-transfer of the unit, relocation to a different property, or installation of any component other than by the manufacture. If the desired unit is more expensive than what the owner originally financed or paid for, the price difference shall be paid by the fireplace owner. Additional costs can be incurred if the use of heavy machinery such as a crane, bulldozer, etc, is considered necessary to access, remove, or perform a repair/correction to the affected unit.

## Finish & Accessories

The lava rocks, and/or the fire logs within this unit are not covered by this limited warranty . Natural stone, rock, travertine, marble, stucco, etc, may be characterized by dry seam, pits, chips, cracks, and fossils that are often filled with grout during installation, these are normal natural imperfections of a hand crafted product. Such imperfections are not considered defects. This warranty is void if the fireplace or firepit has been subject to but not limited to negligence, alterations/modifications, misuse by incorrect and/or prohibited applications of the fireplace. This warranty can also be voided due to improperly done repairs, dings, dents, and scratches caused by improper care, repair, maintenance, and/or the use of unapproved cleaning solutions or methods for your unit.

Using a gas or electric assisted pressure washer, to clean your fireplace is strictly forbidden, and can void your warranty. Cal Flame outdoor products are tested to endure natural encounters with water, such as expected encounters with rain and snow across the United States. Forceful introduction of water to stucco, grout, stone, and other masonry can cause erosion of the natural materials used for the fireplace. Forceful introduction of water may also cause failure between the adhesion of the stucco and the cement board used for your fireplace. The use of an adjustable nozzle hose attachment, that is not powered by an external motor (gas or electric) for light cleaning is permitted. Do not soak the firepit for extended periods of time, allow up to 24hrs for the fireplace to naturally drain and dry off before use to preserve the finish of the fireplace. Certain common acts that can invalidate this limited warranty are usually associated with the regular wear and tear of the unit and cases where the operating instructions were not followed, which lead to damage to the unit.

### Examples of common acts invalidating this warranty include but are not limited to:

- Scratches caused by normal use.
- Damage caused by extreme weather conditions (hot, cold, etc.)
- Damage caused by dirt, sand, and/or water damage.
- Damage caused by continued operation of the unit with either known or unknown problems.
- Damage caused by direct sunlight.
- Damage caused as a result of failure to follow the operating instructions as defined in this owner's manual.

## Warranty Limitations

This Limited Warranty is void if Cal Flame or its designated representative determines that the fireplace has been subjected to alteration, neglect, misuse or abuse, or freight damage caused by a common carrier; any repairs have been attempted by anyone other than a designated representative; or if the failure is caused by accident, acts of God or Nature such as earthquakes, hurricanes, flooding, or other cases beyond the control of LMS, the manufacture of Cal Flame, or other causes beyond the control of the Manufacturer including acts of nature (damage caused by animals, rodents, or other pests) are not covered by this warranty. Gas lines must be installed by a qualified plumber or a local gas company agent. Incorrect installation by unlicensed or persons not qualified to service such equipment will void this limited warranty. Always follow any applicable state or local codes for outdoor natural gas installations.

This limited warranty applies only to fireplaces, and their associated hardware used for personal, and outdoor household purposes. This limited warranty covers the cost replacement parts/components, for a period of two years. This warranty does not apply towards or cover costs of diagnostics, travel fees or shipping costs of replacement parts and hardware. The cost of plastic components is also covered by this warranty for a period of 90 days. Warranty claims must be submitted first to your local dealer or to Cal Flame in order to begin the claim process and verify any required replacement parts associated with the repair of the defect. This limitation is retroactive and applies to all fireplaces, and related hardware manufactured from 2026 and here after. This warranty begins immediately at the day of delivery/installation, and is activated no later than 90 days of the day of delivery. It is the responsibility of the fireplace owner, to register the warranty through Cal Flame.

The manufacture disclaims all warranties, expressed or implies, in fact or in law, to the extent allowed by your State's law, including the warranty of merchantability and fitness for use, except as stated specifically herein. All warranty service must be performed by the manufacture or its designated representative using authorized Cal Flame parts. No agent, dealer, distributor, service company, or other party is authorized to change, modify, or extend the terms of this limited warranty in any manner whatsoever. The manufacture will not be responsible for any statements or representations made in any form that go beyond, are broader than, or are inconsistent with any authorized literature or specifications furnished by Cal Flame. Extended warranties or care plans offered to you by a dealer or vendor is an agreement strictly between the units owner and the dealer or vendor, out of the control of LMS, the manufacture of Cal Flame.



**CONTACT INFORMATION**

For customer service, please contact your authorized dealer immediately.  
If you need additional information and/or assistance, please contact:

**Cal Flame**

Customer Service Department  
1462 East Ninth Street  
Pomona, CA 91766  
Toll Free: 1-800-225-7727  
Fax: 1-909-629-3890

[www.calflamebbq.com](http://www.calflamebbq.com)

*Cal Flame*<sup>®</sup>



**WARNING!** Proposition 65 Warning: Handling the brass material on this product exposes you to lead, a chemical known to the State of California to cause cancer, birth defects or other reproductive harm. (Wash hands after handling this product.)

This product and the fuels used to operate this product (propane or natural gas), and the products of combustion of such fuels, can expose you to chemicals including Benzene, which is known to the state of California to cause cancer and birth defects or reproductive harm.

For more information go to [www.P65Warnings.ca.gov](http://www.P65Warnings.ca.gov).