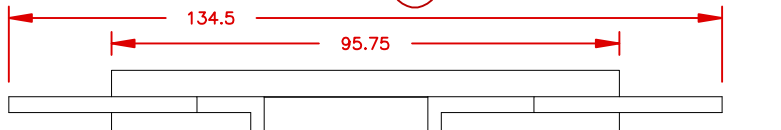
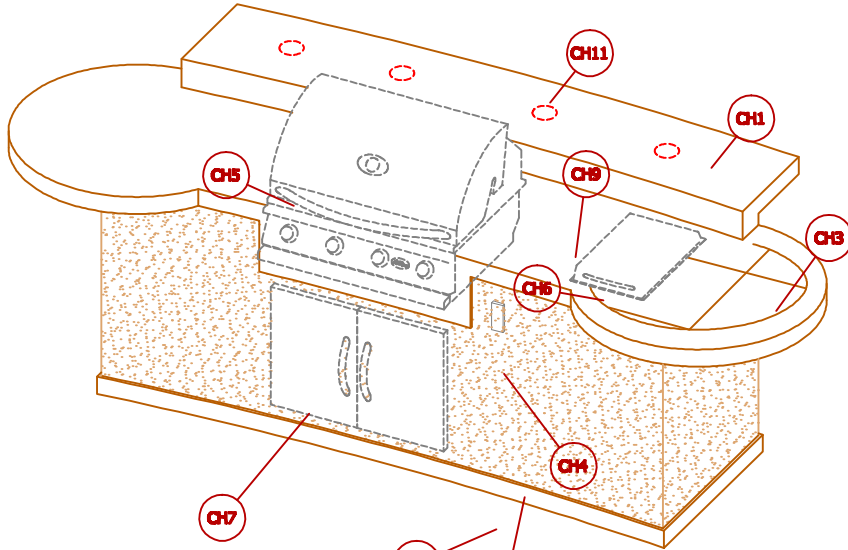


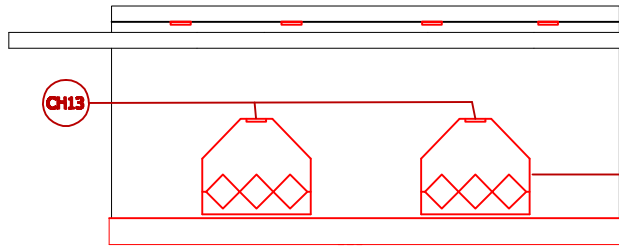
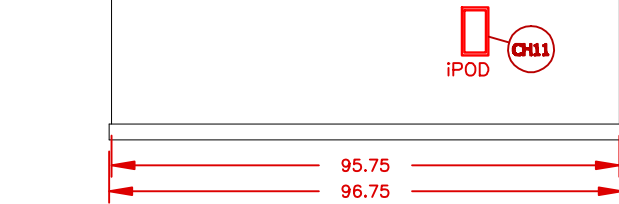
Option Placement May Vary

SEE NOTES BELOW FOR MORE INFORMATION

LINE	BBQ LINE
MODEL	GPV3032
REF.	

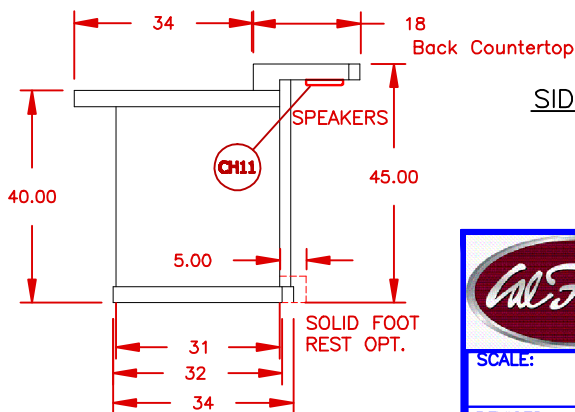


FRONT VIEW



BACK VIEW

SOLID FOOT REST OPT.



SIDE VIEW

NOTE:
DUE TO OUR CONTINUOUS IMPROVEMENT PROGRAM, ALL MODELS
AND SPECIFICATIONS ARE SUBJECT TO CHANGE WITHOUT NOTICE.

COMPATIBLE CONFIGURATION TABLE

SYMB.	DESCRIPTION	
CH1	TOP COLORS CHOICES	
CH2	BASE COLOR CHOICES	
CH3	BASE ACCESSORY CHOICES	
CH4	ELECTRICAL	
CH5	GRILLS CHOICES [A1] G-CHARCOAL [A2] 4 BURNER G4, P4, CONV. [A3] 5 BURNER P4, CONV. TOP GUN	-5 BURNER GRILL NOT COMPATIBLE WITH ITEMS: E4 -5 BURNER + REFRIGERATOR NOT COMPATIBLE WITH ITEMS E5-E6
CH6	SIDE BURNERS CHOICES: [B1] DELUXE DOUBLE SIDE BY SIDE [B2] STAD. SIDE BY SIDE [B3] DELUXE DOUBLE [B4] STANDARD	
CH7	DOOR & DRAWERS CHOICES: [C1] 27 ACCESS DOOR [C2] 18 SINGLE ACCESS DOOR [C3] 30 DOOR & DRAWER COMBO [C4] COMPLETE UTILITY STORAGE [C5] PAPER TOWEL STORAGE [C6] 2 DRAWER STORAGE [C7] 3 DRAWER STORAGE [C8] 3 DRAWER WIDE [C9] PROPANE TANK DRAWER [C10] 2 IN 1 OVEN (110V) ELECTRIC PIZZA 7 WARM.	-30 DOUBLE DOOR AND REFRIGERATOR NOT COMPATIBLE WITH ITEM: C4-C7-C8-C10
CH8	ACCESSORIES: GRILLS [D1] BOTTLE OPENER	
CH9	ACCESSORIES: DROP INS [E1] 12 DROP IN FOOD WARMER [E2] 12 COCKTAIL CENTER [E3] 18 COCKTAIL CENTER [E4] 30 DROP IN BAR [E5] HIBACHI DROP IN GRILL [E6] POWER BURNER [E7] STAINLESS STEEL SINK W FAUCET	
CH10	REFRIGERATORS & OVENS [F1] STAINLESS STEEL REFRIG. [F2] BEER TAP REFRIG. [F3] OUTDOOR S.S. REFRIG. [F4] OUTDOOR S.S. ICE MAKER [F5] OUTDOOR S.S. BEVARE COOLER	ANY REFRIGERATOR NOT COMPATIBLE WITH ITEMS: B1-B3-E1-E2-E3 -E4-E5-E6-E7
CH11	LIGHT & SOUNDS: [G1] LED LIGHTING [G2] UNDERCOUNTER LIGHTS [G3] iPOD STATION W/ [2] SPEAKERS [G4] UMBRELLA HOLE	iPOD STATION NOT COMPATIBLE W/ ITEMS: C4
CH12	ARCH	
CH13	ARCH WITH LED	

STANDARD FEATURES
DESCRIPTION
PORCELAIN TILE 12 X 12 (FIELD) (BORDER)
AMERISTONE STUCCO STANDARD FINISH
INTERIOR ELECTRICAL



TITLE
2019 BARBECUE LINE
GRAND PAVILION SERIES
GPV3032

SCALE:

DWG NO.

DWG BY

J.ORNELAS

REVISED

REV. DESCR.

DATE

11/9/18