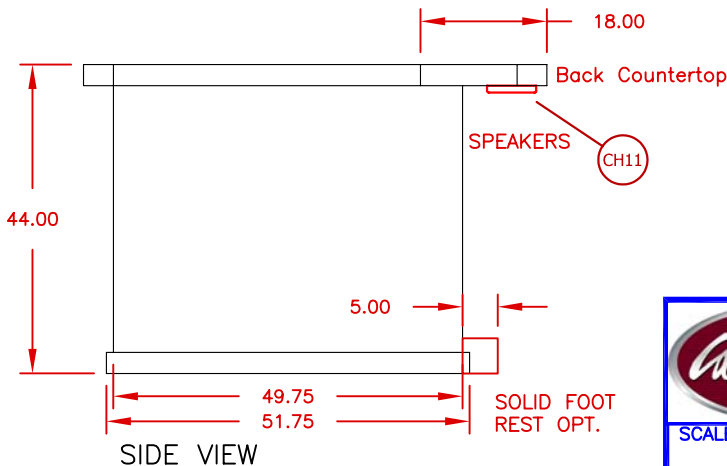
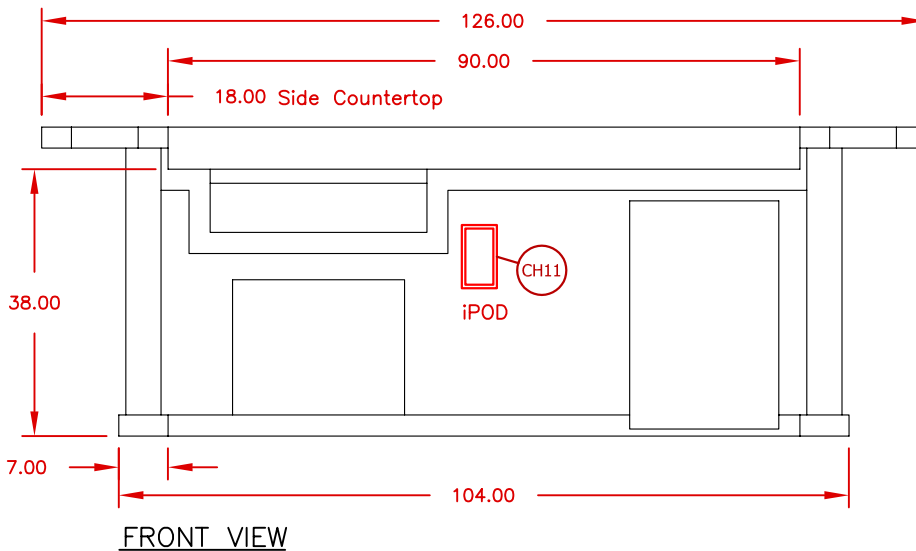
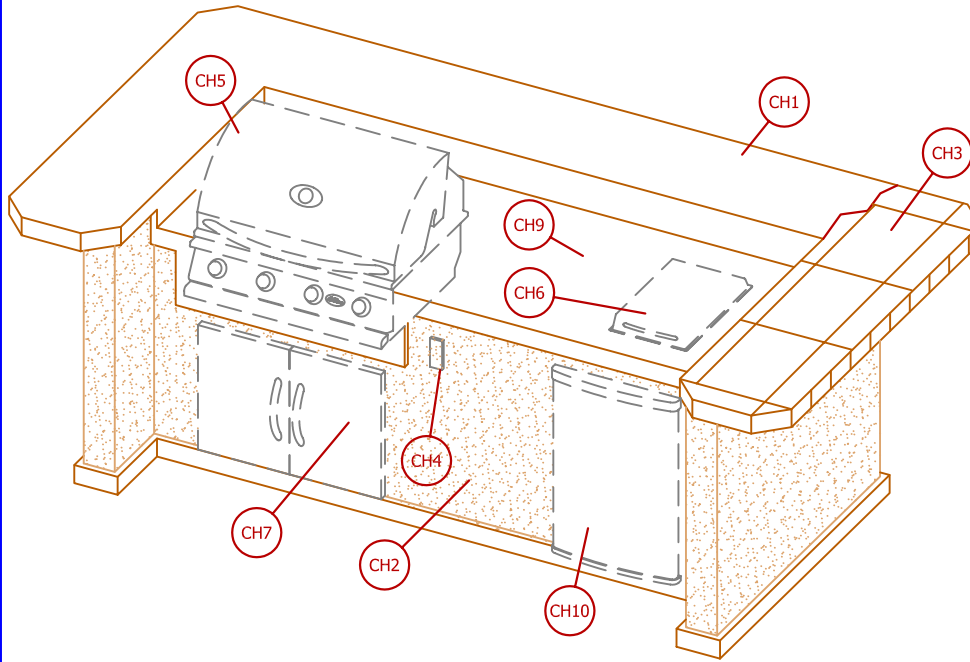


# Option Placement May Vary

SEE NOTES BELOW FOR MORE INFORMATION

|       |          |
|-------|----------|
| LINE  | BBQ LINE |
| MODEL | PV7000   |
| REF.  |          |



## COMPATIBLE CONFIGURATION TABLE

| SYMB. | DESCRIPTION   |   |
|-------|---|---|
| CH1   | TOP COLORS CHOICES  |   |
| CH2   | BASE COLOR CHOICES  |   |
| CH3   | BASE ACCESSORY CHOICES  |   |
| CH4   | ELECTRICAL  |   |
| CH5   | GRILLS CHOICES<br>[A1] G-CHARCOAL<br>[A2] 4 BURNER G4, P4, CONV.<br>[A3] 5 BURNER P4, CONV. TOP GUN   | -5 BURNER GRILL NOT COMPATIBLE WITH ITEMS: E4<br>-5 BURNER + REFRIGERATOR NOT COMPATIBLE WITH ITEMS E5-E6 |
| CH6   | SIDE BURNERS CHOICES:<br>[B1] DELUXE DOUBLE SIDE BY SIDE<br>[B2] STAD. SIDE BY SIDE<br>[B3] DELUXE DOUBLE<br>[B4] STANDARD  |   |
| CH7   | DOOR & DRAWERS CHOICES:<br>[C1] 27 ACCESS DOOR<br>[C2] 18 SINGLE ACCESS DOOR<br>[C3] 30 DOOR & DRAWER COMBO<br>[C4] COMPLETE UTILITY STORAGE<br>[C5] PAPER TOWEL STORAGE<br>[C6] 2 DRAWER STORAGE<br>[C7] 3 DRAWER STORAGE<br>[C8] 3 DRAWER WIDE<br>[C9] PROPANE TANK DRAWER<br>[C10] 2 IN 1 OVEN (110V) ELECTRIC PIZZA 7 WARM. | -30 DOUBLE DOOR AND REFRIGERATOR NOT COMPATIBLE WITH ITEM: C4   |
| CH8   | ACCESSORIES: GRILLS<br>[D1] BOTTLE OPENER   |   |
| CH9   | ACCESSORIES: DROP INS<br>[E1] 12 DROP IN FOOD WARMER<br>[E2] 12 COCKTAIL CENTER<br>[E3] 18 COCKTAIL CENTER<br>[E4] 30 DROP IN BAR<br>[E5] HIBACHI DROP IN GRILL<br>[E6] POWER BURNER<br>[E7] STAINLESS STEEL SINK W FAUCET  |   |
| CH10  | REFRIGERATORS & OVENS<br>[F1] STAINLESS STEEL REFRIG.<br>[F2] BEER TAP REFRIG.<br>[F3] OUTDOOR S.S. REFRIG.<br>[F4] OUTDOOR S.S. ICE MAKER<br>[F5] OUTDOOR S.S. BEVARE COOLER   | ANY REFRIGERATOR NOT COMPATIBLE WITH ITEMS: B1-B3-E1-E4-E5-E6   |
| CH11  | LIGHT & SOUNDS:<br>[G1] LED LIGHTING<br>[G2] UNDERCOUNTER LIGHTS<br>[G3] IPOD STATION W/ [2] SPEAKERS<br>[G4] UMBRELLA HOLE   | IPOD STATION NOT COMPATIBLE W/ ITEMS: C4  |

### STANDARD FEATURES

### DESCRIPTION

|   |
|---|
| PORCELAIN TILE 12 X 12 (FIELD) (BORDER) |
| AMERISTONE STUCCO STANDARD FINISH       |
| INTERIOR ELECTRICAL                     |



TITLE  
**2017 BARBECUE LINE  
PAVILION SERIES  
PV7000**

|         |             |                           |
|---------|-------------|---------------------------|
| SCALE:  | DWG NO.     | DWG BY<br><b>G.GARCIA</b> |
| REVISED | REV. DESCR. | DATE<br><b>12/13/16</b>   |

NOTE: DUE TO OUR CONTINUOUS IMPROVEMENT PROGRAM, ALL MODELS AND SPECIFICATIONS ARE SUBJECT TO CHANGE WITHOUT NOTICE.